

These days, being knowledgeable about the latest industry buzz words and acronyms is crucial not only for the success of your building project, but for its profitability as well. So it's natural to want quick and easy answers to all of those green building head scratchers: What is this LEED™ thing everyone is talking about? Why should I be interested in the LEED program? How do I navigate the certification process and still have time to focus on my business?

Attune Development Consultants has a proven track record of success in guiding people just like you through the LEED certification process.

**3 BILLION+**

SQUARE FOOTAGE CURRENTLY INVOLVED IN THE LEED SYSTEM:

Source: USGBC LEED Resource materials

#### LEED SPECIFICATIONS

Division 1 specifications, reinforced with added requirements in Divisions 1 through 16, are keys to successful LEED integration and documentation collection. Attune has a clear understanding on how to use the specifications as a tool to assist the team in securing environmentally preferable materials and collecting needed LEED information from subcontractors and suppliers.

#### LEED DOCUMENTATION SUBMISSION PROCESS

Attune may be retained as the consultant responsible for registering Green Building Projects with USGBC, submitting all required documentation, and responding to any requests for clarification.

#### USGBC STEWARD IN EDUCATION

Attune not only knows the construction industry inside and out, our LEED APs offer educational support to those seeking to become accredited. We are available to teach classes of any size at your facility or elsewhere.

*No matter what your project's needs are, we'd love to help you navigate the LEED certification process. Please give us a call today to discuss your project's needs and all that we can do for you, your employees, and your business goals.*



The USGBC Member Logo is a trademark owned by the U.S. Green Building Council and is used by permission. The logo signifies only that Attune Development Consultants is a USGBC member; USGBC does not review, certify, or endorse the products or services offered by its members. LEED Accredited Professional, its related acronym, and the LEED AP logo are trademarks owned by the U.S. Green Building Council and awarded to individuals under license by the Green Building Certification Institute.

Printed using low-VOC inks on recycled fiber containing 10% post-consumer waste.



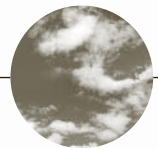
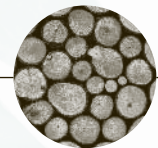
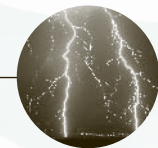
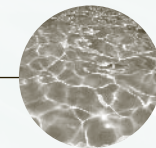
attune

Healthy, environmentally responsible, & profitable construction?

**We can manage that.**

attune

Attune Development Consultants  
[www.attunedevelopment.com](http://www.attunedevelopment.com)



## Being good to Mother Nature is great for your bottom line.

Whether you're creating a new structure or renovating an existing building, planning for LEED™ certification early in the development process not only provides a better end product, it also avoids potentially expensive additional service requests from design consultants and contractor change proposals during project delivery. So what is LEED?

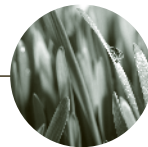
The U.S. Green Building Council's (USGBC) Leadership in Energy and Environmental Design (LEED) program is a leading-edge system for designing, constructing, operating and certifying green buildings. This nationally accepted point-based rating system promotes a whole-building approach to sustainability by recognizing performance in six key areas of human and environmental health: sustainable site development, water savings, energy efficiency, materials selection, indoor environmental quality, and innovation in operations (or innovation & design depending upon rating system). Buildings can obtain certified, silver, gold, or platinum levels according to their sustainability and green criteria.

*LEED recognition is important for business owners because it provides a quick return on investment and increases property value by offering significant benefits, including state and local government incentives, recognized leadership in the green building sector, and a healthier, more cost-effective place to work.*

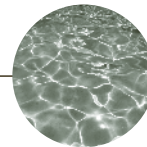
### What types of buildings are eligible for LEED certification?

Most building types, whether new construction or major renovation. These types include—but are not limited to—commercial offices, retail and service establishments, institutional buildings (e.g., libraries, schools, museums and religious institutions), hotels, new home developments, and residential buildings of four or more habitable stories.

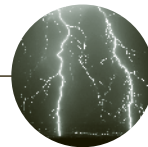
### LEED GREEN BUILDING RATING SYSTEM CATEGORIES:



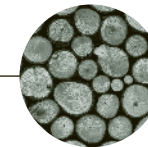
SUSTAINABLE SITES



WATER EFFICIENCY



ENERGY & ATMOSPHERE



MATERIALS & RESOURCES



INDOOR ENVIRONMENTAL QUALITY



INNOVATION IN OPERATIONS/DESIGN

### IN THE U.S. ALONE, OFFICE BUILDINGS CURRENTLY ACCOUNT FOR:

- 70% of electricity consumption
- 39% of energy use
- 39% of all carbon dioxide (CO<sub>2</sub>) emissions
- 40% of raw materials use
- 30% of waste output (136 million tons annually), and
- 12% of potable water consumption\*

*\*More statistics on the built environment in the U.S. and LEED are available in Green Building by the Numbers at [www.usgbc.org](http://www.usgbc.org).*

### LEED CERTIFIED BUILDINGS:

- Lower operating costs and increase asset value.
- Reduce waste sent to landfills.
- Conserve energy and water.
- Are healthier and safer for occupants.
- Reduce harmful greenhouse gas emissions.
- Qualify for tax rebates, zoning allowances and other incentives in hundreds of cities.
- Demonstrate an owner's commitment to environmental stewardship and social responsibility.

## As an accomplished LEED consulting firm, we've done it all.

Becoming a LEED Accredited Professional (LEED AP™) is an extremely difficult process and requires extensive building industry experience. Attune's LEED APs bring their intimate knowledge of environmental impacts, management skills and construction expertise to the process and can guide architects, engineering firms general contractors, corporations, local municipalities, or homeowners in the design and implementation of eco-efficient development. Our primary goal is always to help you obtain a desirable LEED certification while still maintaining initial project expectations for quality, delivery cost, and schedule adherence.

### CONSULTING

By pairing our LEED expertise with our professional experience as architects, contractors, and developers, Attune can provide your team with the guidance and insights to ensure a successful and more effective LEED effort. Whether you're exploring design strategies to enhance energy performance or innovative ways to reduce water usage, we're at the forefront of understanding and applying green-building strategies and technologies. As design leaders, we develop the scope of work for sub-consultants and contractors and then ensure that your project earns the right points to achieve LEED status.

### PROJECT MANAGEMENT

We can assist in assembling a team via our extensive network of proven professionals, including architects, structural and civil engineers, building system manufacturers, contractors, lighting consultants, and many more. We work with the building owner, design team, and general contractor to ensure that everyone understands their roles and deliverables in achieving specific LEED credits. Utilizing our processes and tools, we distribute LEED documentation requirement and status information, answer any emerging LEED credit criteria questions, and ultimately guide the team through a clear and efficient LEED effort. We also compile and submit documentation to USGBC as well as respond to any requests for clarification on specific points.

### ATTUNE'S LEED EXPERTISE WILL STREAMLINE EVERY STAGE OF YOUR PROJECT:

#### EARLY BIRD SPECIAL

Our pre-construction goal establishment meetings allow team members to fully consider innovative initiatives from the start.

#### GREEN BUILDING CHARRETTE

By hosting this brainstorming session for all team decision makers—owners, engineers, architects, etc—we can formulate the project while changes are still flexible.

#### WE ARE THE CHAMPIONS, MY FRIEND

Our multiple skill sets make us the obvious choice to communicate team member requirements and to manage documentation throughout design and construction.

#### REGISTER YOUR PROJECT

#### ADMINISTER YOUR PROJECT

#### APPLY FOR CERTIFICATION